

Outbreaks of Illness: 2014 End of Year Report



Outbreaks occur when there is an increase in the number of disease cases, above what would normally be expected within a specific place or group of people and within a certain period of time. In 2014, 124 outbreaks were investigated by Maricopa County Department of Public Health (MCDPH). Of those 124 outbreaks, 23 were ruled out. This report describes trends and provides summary statistics for outbreaks occurring in Maricopa County in 2014. For more information, please contact the Office of Epidemiology at MCDPH (602) 372-2605.

Characteristics of Reported Outbreaks: Maricopa County, 2014

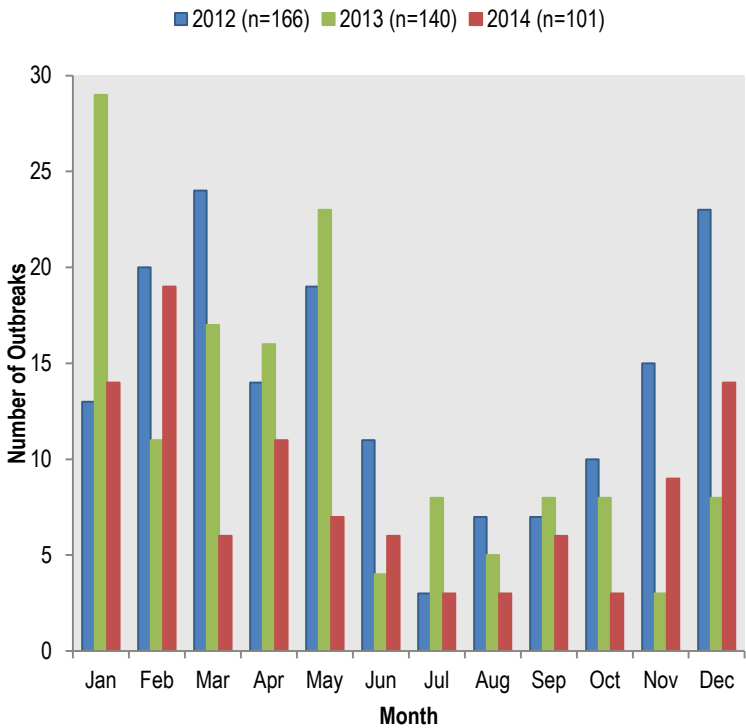
Year Total*	Number of Persons Ill per Outbreak†		Hospitalizations†	Deaths†	Demographics			
					Average % Gender†		Age Ranges†	
101	2 324 6	=Minimum =Maximum =Median	49	4	41% 47% 10%	=Female =Male =Unknown	6 (1%) 53 (3%) 122 (7%) 166 (9%) 134 (7%) 105 (6%) 305 (17%) 865 (50%)	=Less than 1 year =1-4 years =5-9 years =10-19 years =20-49 years =50-74 years =>74 years =Unknown

*23 reported outbreaks were later ruled-out and not included in this summary
†For cases whom information was available

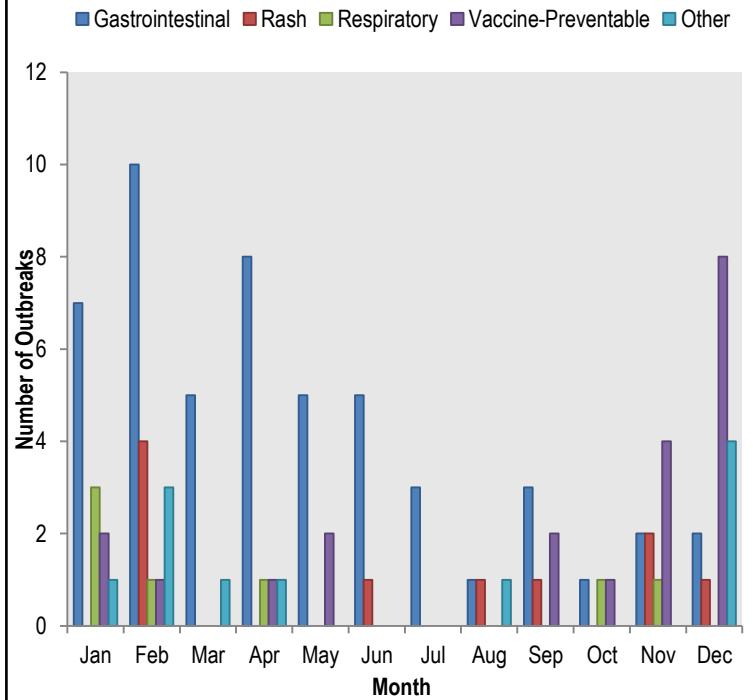
2014 Outbreaks by Etiology

Gastrointestinal	52 (51%)	Rash	10 (10%)
Campylobacter	2 (2%)	Impetigo	2 (2%)
E. coli	1 (1%)	Mycobacterium	1 (1%)
Norovirus	20 (19%)	Scabies	7 (7%)
Salmonella	6 (6%)		
Shigella	1 (1%)	Respiratory	7 (7%)
Vibrio infection	1 (1%)	Influenza	1 (1%)
Gastrointestinal- Unknown Type	21 (20%)	Respiratory Syncytial Virus (RSV)	1 (1%)
		Strep Throat (Type A, non-invasive)	2 (2%)
Other	11 (11%)	Respiratory- Unknown Type	3 (3%)
Conjunctivitis	4 (4%)		
Hand, Foot, and Mouth Disease	3 (3%)	Vaccine-Preventable	21 (21%)
Head Lice	4 (4%)	Mumps	1 (1%)
		Pertussis	15 (14%)
		Varicella	5 (5%)

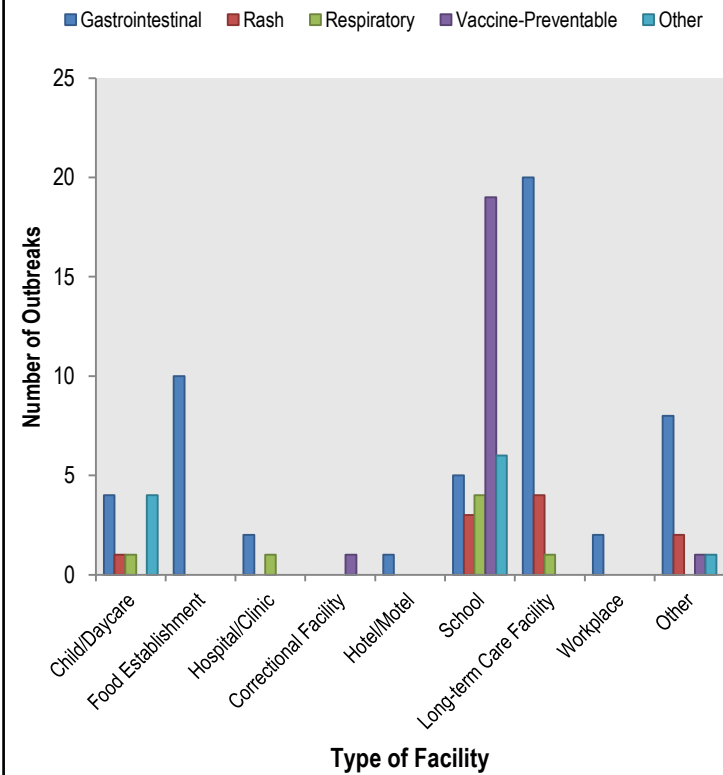
Number of Outbreaks Reported by Month 2012-2014



Number of Outbreaks Reported by Type and Month 2014 (n=101)



Number of Outbreaks by Type and Facility 2014



Number of Gastrointestinal Outbreaks by Etiology 2014

