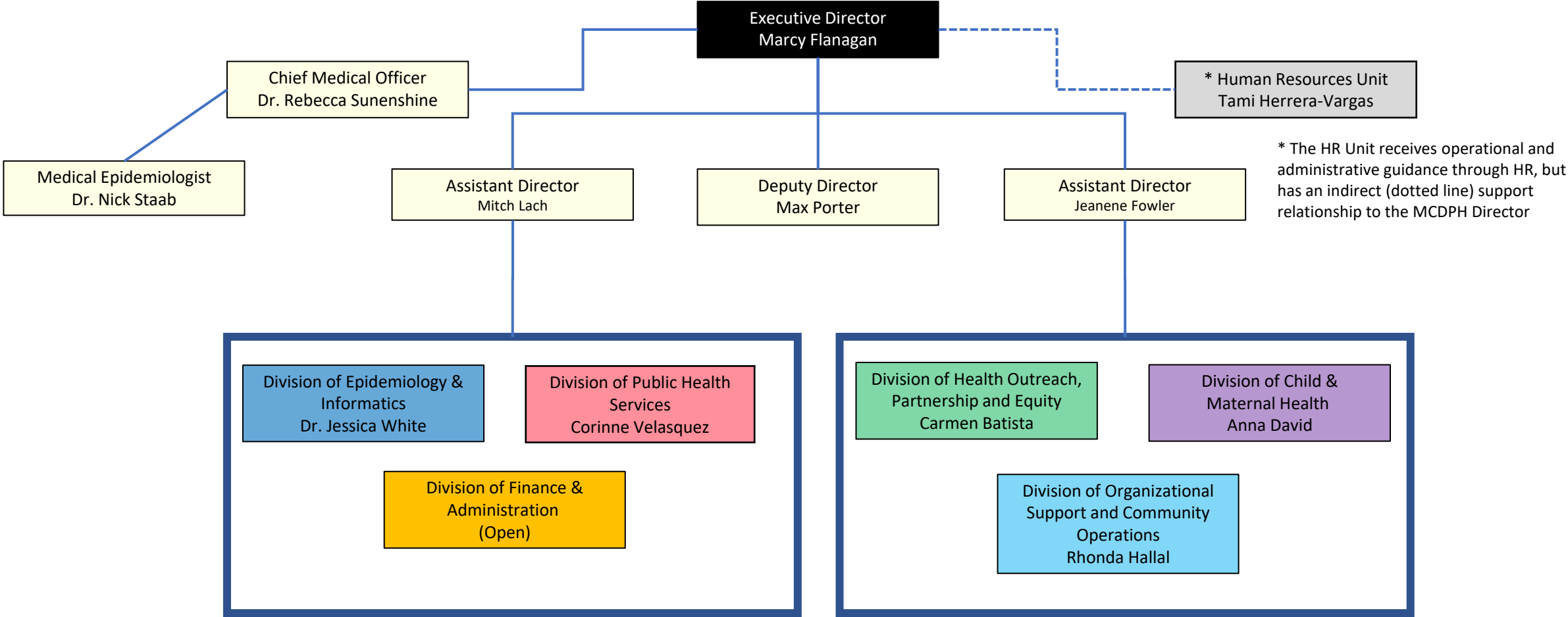


Maricopa County Department of Public Health  
Organizational Structure – Mar 2023



# Epidemiology & Informatics

## Dr. Jessica White

### Public Health Science & Medical Epi

- SME Support
- Scientific Analysis

### Data Modernization & Informatics

- Data Governance
- Strategic Technology Plan
- Data Storage and Structure
- Health Informatics

### Investigations

- Disease investigation and reporting
- HAI
- Zoonotic and vector borne diseases

### Communicable Disease Data Surveillance & Outbreak Response

- Disease Surveillance
- Outbreaks
- Cluster Response
- Data Visualization

### Health Equity & Community Data

- Public health data analysis
- CHIP
- Health equity data
- Climate & health data
- Environmental Public Health Tracking
- Maternal & child health data

### Substance Use & Mental Health

- O2DA
- Substance misuse
- Substance & mental health surveillance

### Business Operations & Administration

- Epi business operations
- Business analysis
- Epi administrative support

# Finance and Administration (Open)

### Budget & Finance

- Budget
- Finance
- Accounting
- Administrative Support
- COVID Finance

### Grant Management

- Grant Writing
- Grant Administration
- Grant Reporting
- Grant Support Teams

### Contracts & Procurement

- Procurement
- Purchasing
- Contract Development
- RFP/IGA/MOU

### Logistics

- Logistics
- Supply
- Inventory
- Capital Assets
- Fleet
- Telecom

### \*OET

- Desktop Support
- OET Support & Coordination
- Technology Equipment Support

\* The OET Unit receives operational and administrative guidance through OET, but has an indirect (dotted line) support relationship to MCDPH through the division

# Public Health Services

## Corinne Velasquez

### STD

- STD Disease Investigation
- STD Surveillance
- STD Contact Tracing
- STD Support Services

### TB/HIV/ Refugee

- TB/HIV Investigation
- TB/HIV Surveillance
- TB/HIV Contact Tracing
- TB/HIV Support Services
- Refugee Clinic

### Medical and Lab

- HIV Treatment
- STD Treatment
- TB Treatment
- Laboratory Testing
- Pharmaceutical and Vaccine

### Immunizations and Vaccine Equity

- Mobile Vaccine Unit
- Vaccine Clinic Satellites
- Vaccine Inventory/Mgt
- Nurse Educators
- Vaccine Equity
- Lead Hazard
- CARES Team
- Schools Team (ELC3)

### Clinic Support Operations

- Medical Records
- Finance/Business Analysis
- Technology Support
- Mail Courier Services
- Administrative Support

### Vital Registration

- Birth Registration
- Death Registration
- Vital Records Amendments
- Partner Services
- CIDS

# Health Outreach, Partnership and Equity

## Carmen Batista

### Mental Health & Substance Use

- OD2A
- Behavioral Health
- Suicide Review Brd
- Opioid Settlement
- SHIFT
- STAND
- Smoke free
- Youth Tobacco
- Cessation

### Ryan White

- Grants/Contracts
- Fiscal Admin
- Quality Manager
- Special Projects
- Nurse Practitioner

### Outreach and Engagement/ Healthy Living

- Regional HE Teams
- Disparity Support
- Health Literacy
- Focused pops – Aging, LGBTQ+, Disabilities, Refugee, Immigrant Migrant
- RIM sup
- Clinical Liaisons
- Find Help
- HIPMC
- Synapse
- Comm. Health needs assmnt
- Comm. Hlth Imp.
- Health AZ Worksites
- Climate
- SNAP Ed
- Food Access and Systems
- Active Living and Blt Env
- Early Childhood Practices

# Child & Maternal Health

Anna David

## Family Health

- Nurse Family Partnership
- Newborn Intensive Care Program
- Healthy Start

## WIC

- Nutrition Education & Srvc
- Breastfeeding Education & Srvc
- Nutrition assessment & counseling
- Service referrals

## Oral Health

- Dental Sealant
- First Teeth First
- Oral Health Education

## MCH Strategy

- Teen pregnancy prevention
- MCH Block Grant

## CCHC

- Childcare Health Consulting
- Technical Assistance
- Education
- Disease Mitigation
- Referral Services

# Organizational Support and Community Operations

## Rhonda Hallal

### Communication and Marketing

- PIO Supervisor
- SNAP ED Digital Content
- Emergency Communications
- Behavioral Health and Substance Use
- Internal Comms
- Digital Content

### Preparedness & Response

- COOP
- Preparedness and Response
- MRC
- Palo Verde
- MCM
- DOC

### Organizational Excellence/Workforce Development

- Perf Improvement
- Program Evaluation
- Accreditation
- Strategic Planning/Strategic Initiatives
- Academic Health Department
- Internships/Fellowships
- Dietetic Internship
- Learning & Development
- Employee Resiliency
- Employee Experience
- Diversity, Equity, Inclusion & Belonging (DEIB)

### PH Liaisons

- 5 PH Liaisons
- Regional focus

### Specialized Services

- Organizational Structure
- Facilities
- Department Policies
- Public Health Policy
- Organizational Process
- Records Retention
- Workers Compensation
- Risk Management
- 14<sup>th</sup> Floor Reception