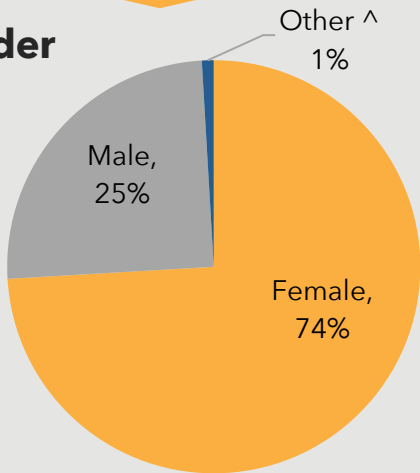


Northwest Valley

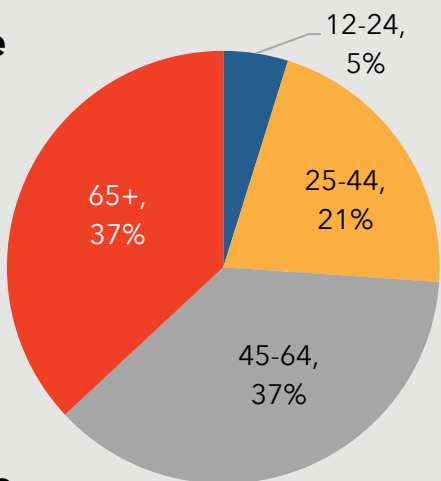
Responses to the 2019 Community Health Assessment Survey from the residents in the Northwest Valley.

Who took the survey in the Northwest Valley?

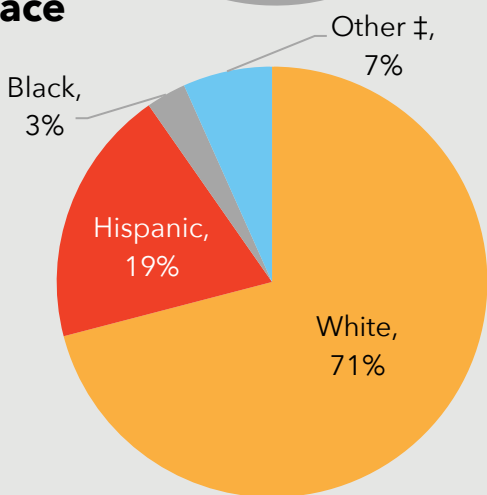
Gender



Age



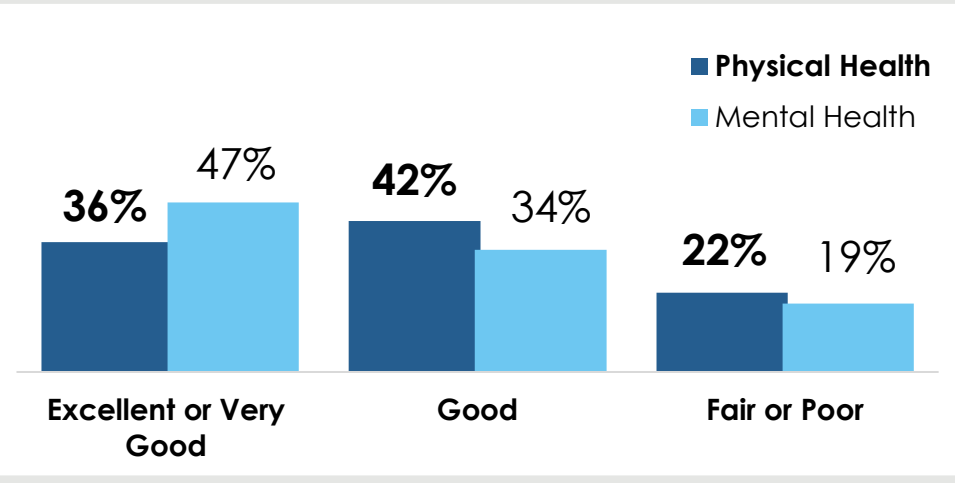
Race



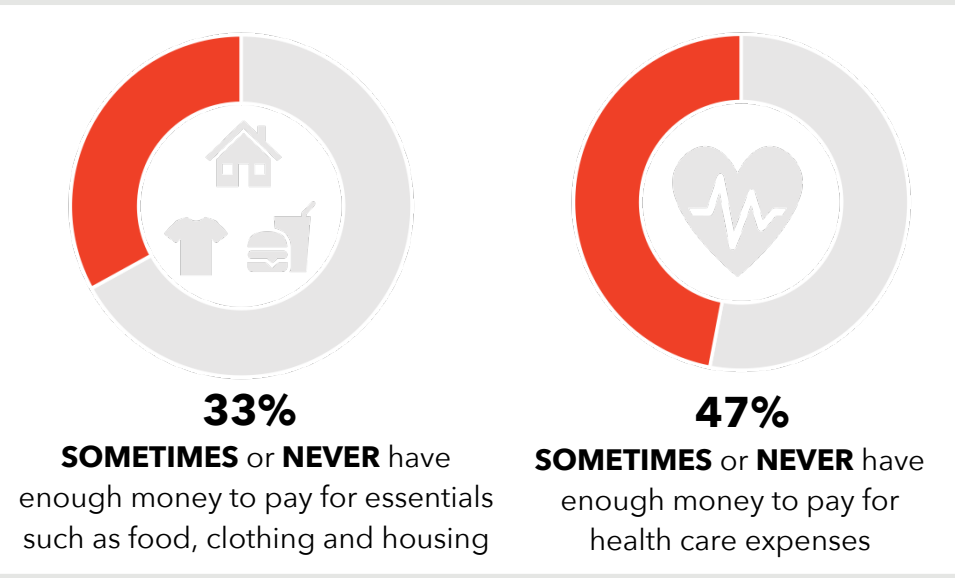
20%

reported a household income of **less than \$20,000.**

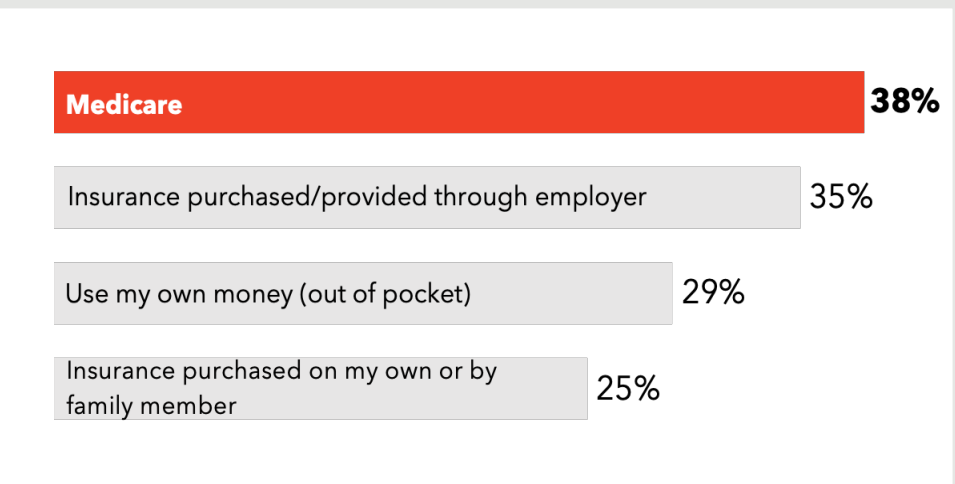
How do respondents in the Northwest Valley rate their Physical and Mental Health?



Do respondents in the Northwest Valley struggle each month to pay for medical care and/or necessities?



How do residents in the Northwest Valley pay for their health care?



2286 surveys collected.

^ The 'Other' category includes 'Transgender' responses for gender.

‡ Due to low response rates, the 'Other' category includes 'Asian', 'American Indian or Native American', 'Multi-racial', and 'Other' responses or race/ethnicity.

TOP 3
COMMUNITY
STRENGTHS



Access to parks and recreation sites ----- 56%

Access to public libraries and community centers ----- 55%

Clean environments and streets ----- 51%

TOP 3
COMMUNITY
ISSUES



Distracted driving ----- 49%

Lack of public transportation ----- 31%

Homelessness ----- 21%

TOP 3
BARRIERS TO
HEALTHCARE



Difficulty finding the right provider for my care ----- 33%

Underinsured ----- 31%

Inconvenient office hours ----- 19%

TOP 3
HEALTH
CONDITIONS



High blood pressure or cholesterol ----- 39%

Alcohol/substance abuse ----- 36%

Cancers ----- 35%

Want More?

- Find out how your city compares to other cities in Maricopa County.
- Submit a Data Request to obtain regional survey results.
- Join Synapse to partner with local organizations.

Contact:

[Eileen Aguilar](#)

(602) 859-4763

Eileen.Aguilar@maricopa.gov

[Data Request:](#)

<https://www.maricopa.gov/data-request>