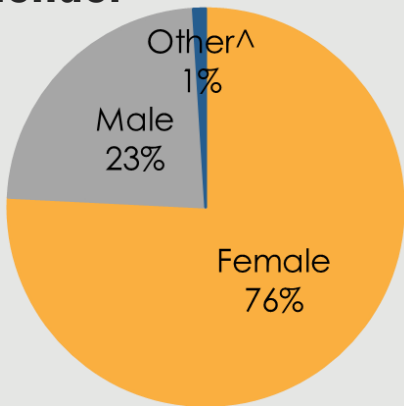


CITY OF SUN CITY

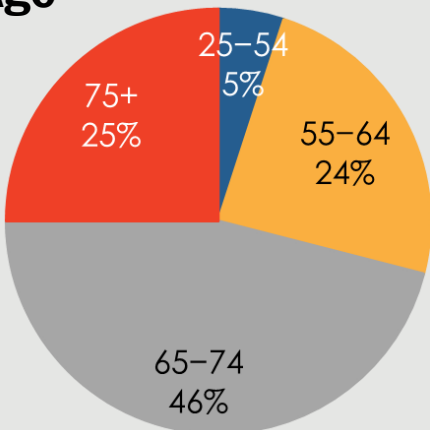
Responses to the 2019 Community Health Assessment Survey from the residents of Sun City.

Who took the Survey in Sun City?

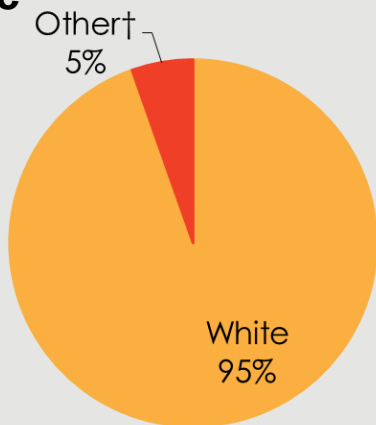
Gender



Age

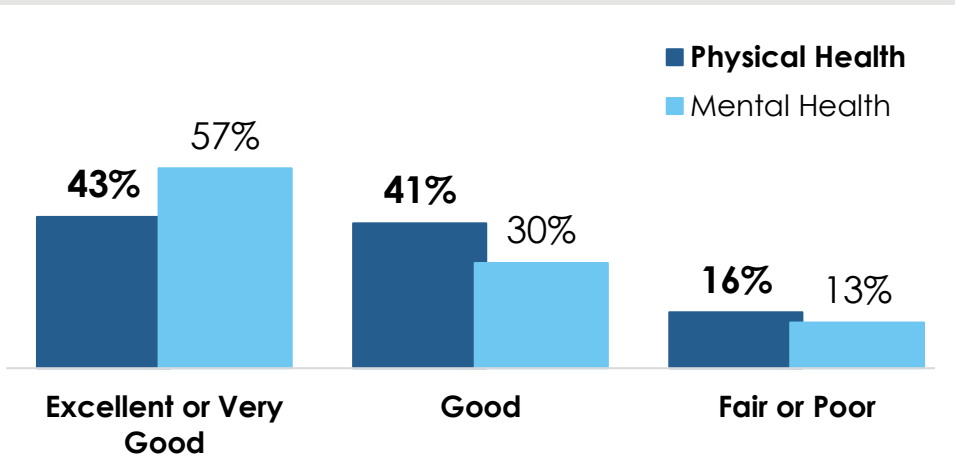


Race

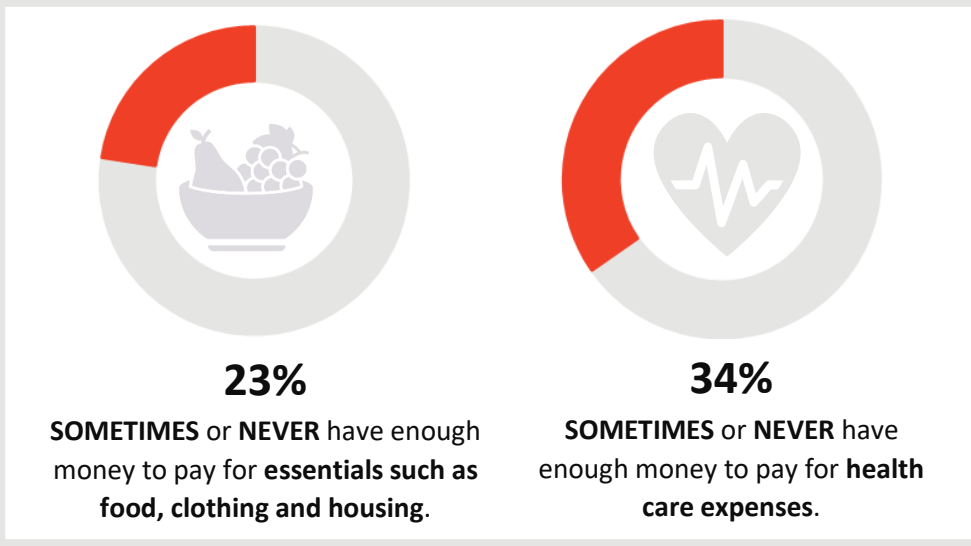


14% reported a household income of **less than \$20,000.**

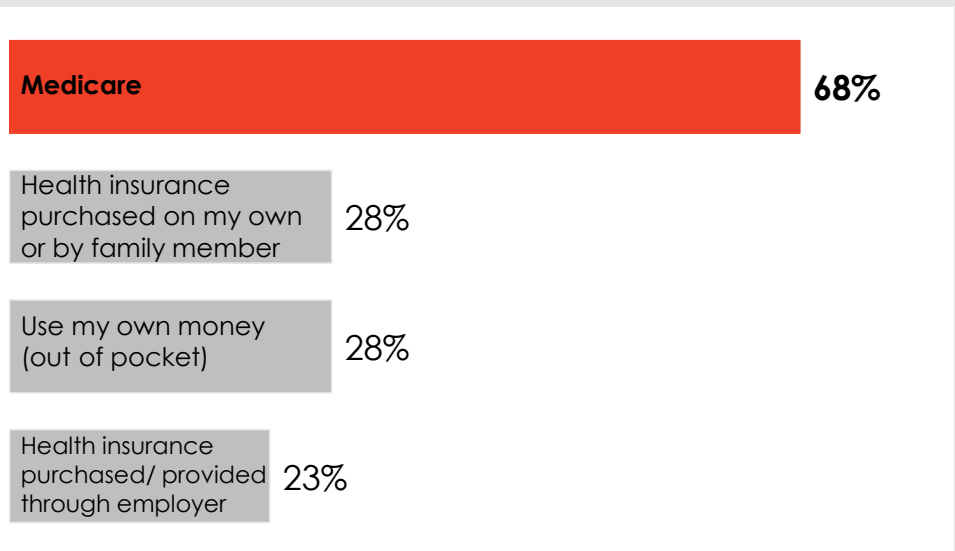
How do Sun City respondents rate their Physical and Mental Health?



Do Sun City respondents struggle each month to pay for medical care and/or necessities?



How do Sun City residents pay for health care?



374 surveys collected.

Some demographic data may total over 100% due to rounding.

† Due to low response rates, the 'Other' category includes 'Asian', 'Native Hawaiian', 'Alaska Native', 'American Indian/Native American', 'Hispanic or Latino', 'Black or African American', 'Multi-racial', and 'Other' responses or race/ethnicity.

The City of Sun City Survey Respondents

TOP 3 COMMUNITY STRENGTHS



Access to Fitness Programs	-----	69%
Clean Environments and Streets	-----	64%
Access to Services for Seniors	-----	63%

TOP 3 COMMUNITY ISSUES



Distracted Driving	-----	53%
Lack of Public Transportation	-----	41%
Elder Abuse or Neglect	-----	37%

TOP 3 BARRIERS TO HEALTHCARE



Difficulty Finding the Right Provider for my Care	-----	37%
Underinsured	-----	32%
Other	-----	23%

TOP 3 HEALTH CONDITIONS



Heart Disease and Stroke	-----	57%
Arthritis	-----	54%
High Blood Pressure or Cholesterol	-----	50%

Want More?

- Find out how your city compares to other cities in Maricopa County.
- Submit a Data Request to obtain regional survey results.
- Join Synapse to partner with local organizations.

Contact:

[Eileen Aguilar](#)

(602) 859-4763

Eileen.Aguilar@maricopa.gov

Data Request:

<https://www.maricopa.gov/data-request>