

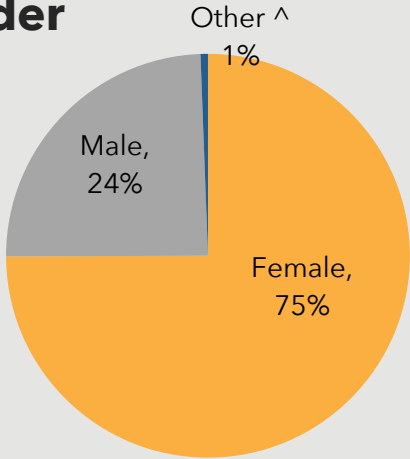
# CITY OF TEMPE

Responses to the 2019 Community Health Assessment Survey from the residents of Tempe

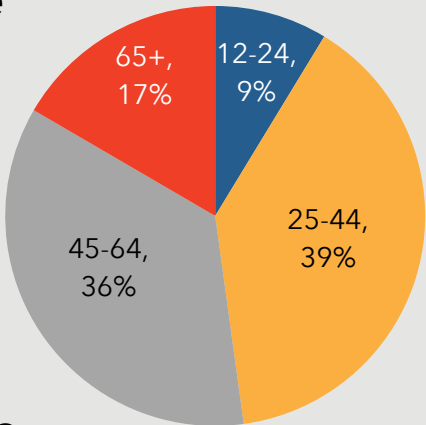
## Who took the survey in Tempe?

.....

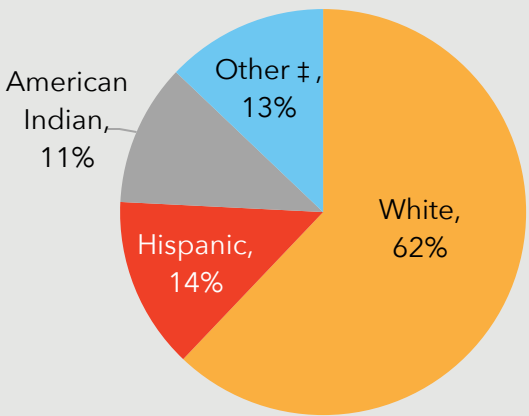
### Gender



### Age

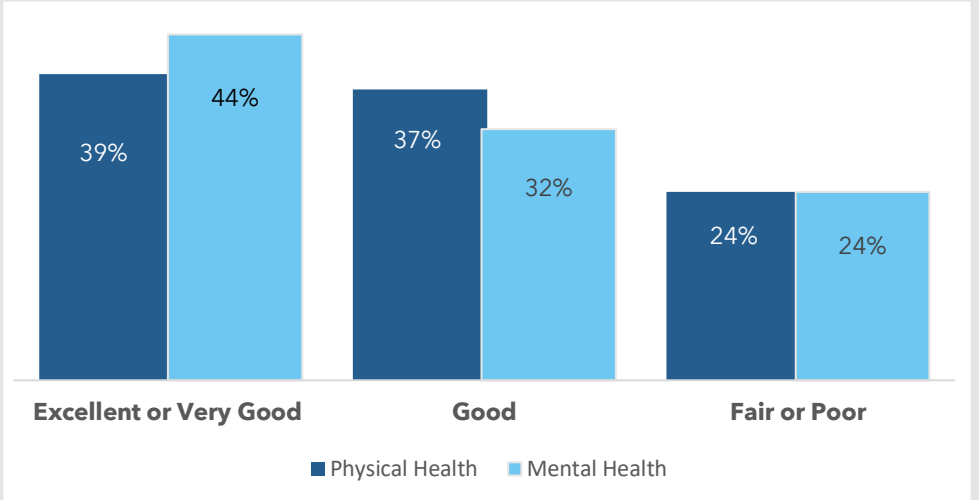


### Race

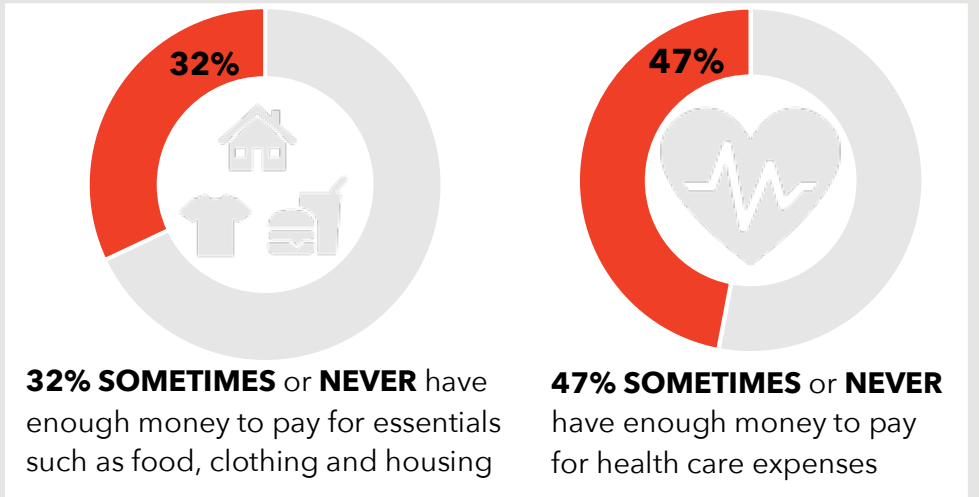


**15%** reported a household income of **less than \$20,000.**

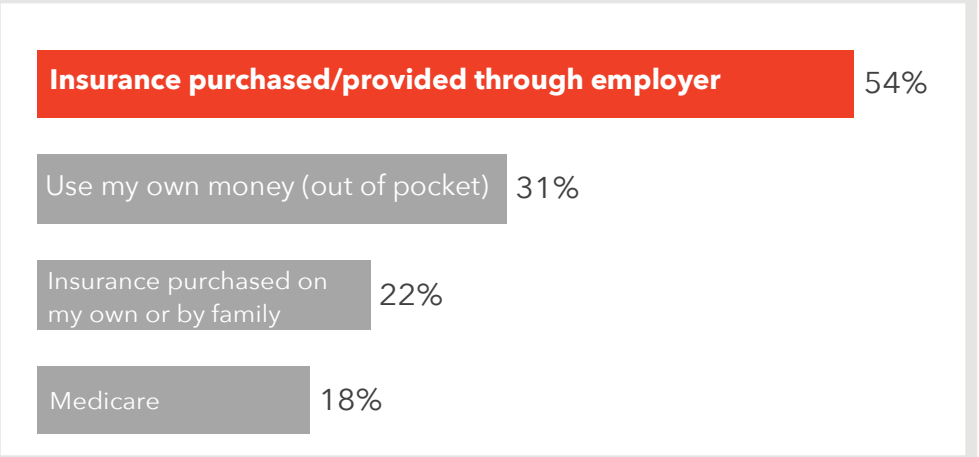
## How do Tempe respondents rate their Physical and Mental Health?



## Do Tempe respondents struggle each month to pay for medical care and/or necessities?



## How do Tempe respondents pay for their health care?



508 surveys collected.

Some demographic data will total over 100% due to rounding.

^ The 'Other' category includes 'Transgender' responses for gender.

‡ Due to low response rates, the 'Other' category includes 'Asian', 'Native Hawaiian', 'Alaska Native', 'American Indian/Native American', 'Black or African American', 'Multi-racial', and 'Other' responses or race/ethnicity.

# The City of Tempe Survey Respondents

## TOP 3 COMMUNITY STRENGTHS



Access to parks and recreation sites	----- 67%
Access to public libraries and community centers	----- 59%
Access to public transportation	----- 49%

## TOP 3 COMMUNITY ISSUES



Homelessness	----- 47%
Distracted driving	----- 46%
Lack of affordable housing	----- 31%

## TOP 3 BARRIERS TO HEALTHCARE



Underinsured	----- 40%
Difficulty finding the right provider for my care	----- 33%
Inconvenient office hours	----- 27%

## TOP 3 HEALTH CONDITIONS



Alcohol/substance abuse	----- 63%
Mental health issues	----- 54%
Overweight/obesity	----- 39%

## Want More?

- Find out how your city compares to other cities in Maricopa County.
- Submit a Data Request to obtain regional survey results.
- Join Synapse to partner with local organizations.

## Contact:

[Eileen Aguilar](#)

(602) 859-4763

[Eileen.Aguilar@maricopa.gov](mailto:Eileen.Aguilar@maricopa.gov)

[Data Request:](#)

<https://www.maricopa.gov/data-request>