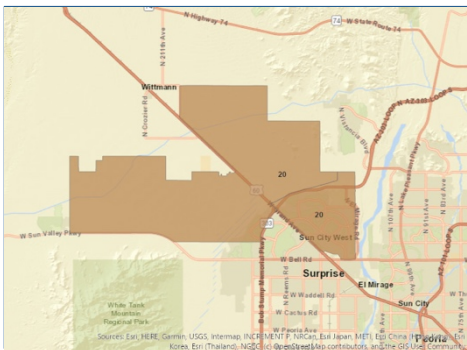




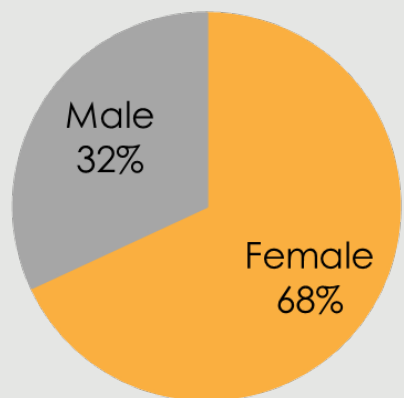
ZONE 20

Responses to the 2019 Community Health Assessment Survey from the residents of Zone 20.

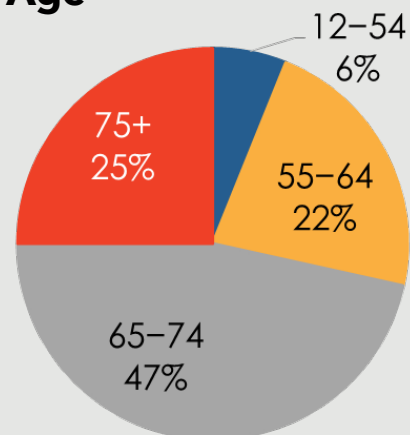


Who took the survey in Zone 20?

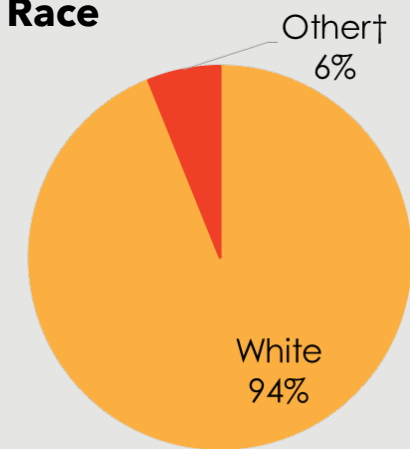
Gender



Age



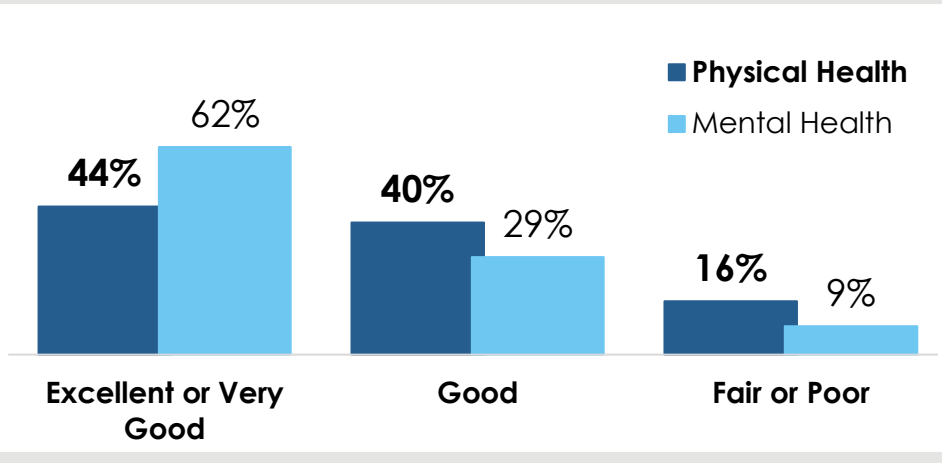
Race



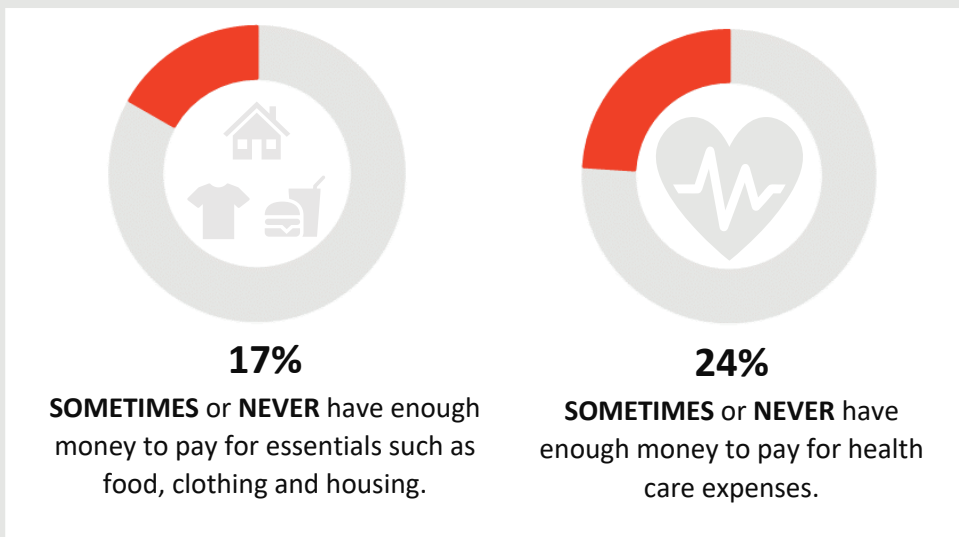
7%

reported a household income of **less than \$20,000.**

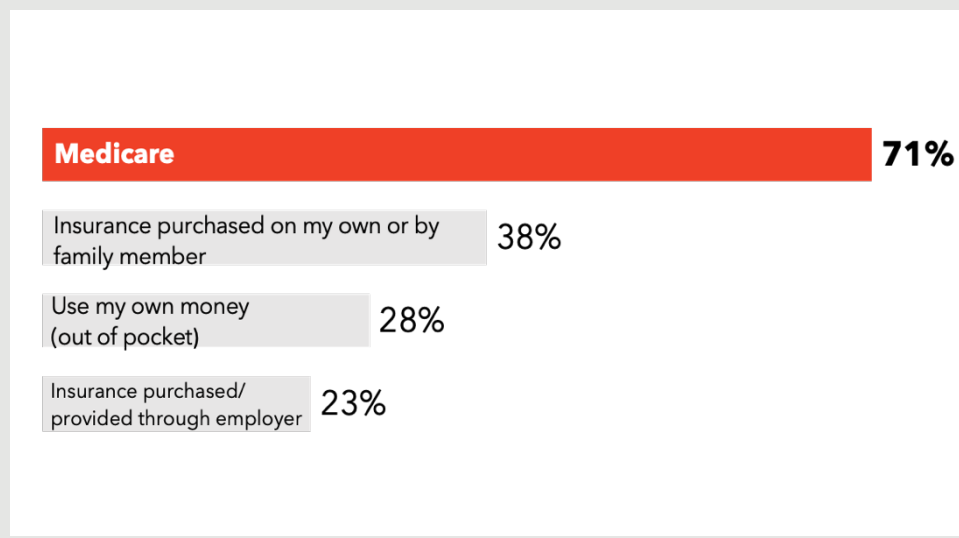
How do respondents in Zone 20 rate their Physical and Mental Health?



Do respondents in Zone 20 struggle each month to pay for medical care and/or necessities?



How do residents in Zone 20 pay for health care?



376 surveys collected.

Some demographic data may total over 100% due to rounding.

† Due to low response rates, the 'Other' category includes 'Asian', 'American Indian/Native American', 'Black or African American', 'Hispanic or Latino', and 'Other' responses or race/ethnicity.

TOP 3
COMMUNITY
STRENGTHS



Clean environments and streets ----- 72%

Access to fitness programs ----- 70%

Access to medical care ----- 69%

TOP 3
COMMUNITY
ISSUES



Distracted driving ----- 62%

Lack of public transportation ----- 52%

Elder abuse/neglect ----- 31%

TOP 3
BARRIERS TO
HEALTHCARE



Difficulty finding the right provider for my care ----- 42%

Other ----- 29%

Underinsured ----- 25%

TOP 3
HEALTH
CONDITIONS



Heart disease and stroke ----- 63%

Cancers ----- 57%

Arthritis ----- 57%

Want More?

- Find out how your city compares to other cities in Maricopa County.
- Submit a Data Request to obtain regional survey results.
- Join Synapse to partner with local organizations.

Contact:

[Eileen Aguilar](#)

(602) 859-4763

Eileen.Aguilar@maricopa.gov

[Data Request:](#)

<https://www.maricopa.gov/data-request>